

# KNOWLEDGE ORGANISER

Year 4 **Science**

## **Animals including humans - Digestion**



### Vocabulary

*Digest* - Break down food so it can be used by the body

*Oesophagus* - A muscular tube which moves food from the mouth to the stomach

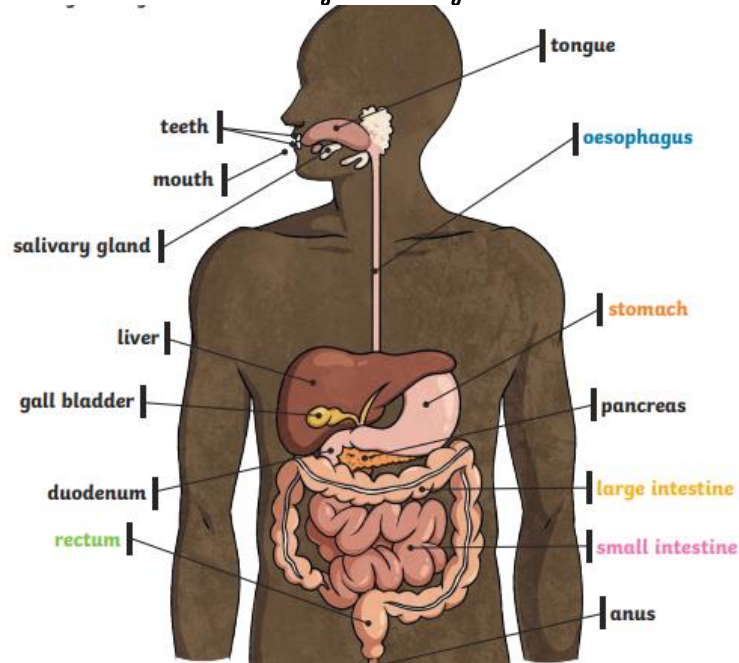
*Stomach* - An organ in the digestive system where food is broken down with stomach acid and by being churned around

*Small intestine* - Part of the intestine where nutrients are absorbed by the body

*Large intestine* - Part of the intestine where water is absorbed from remaining waste food. Faeces are formed in the large intestine.

*Rectum* - Part of the digestive system where faeces are stored before leaving the body through the anus

### The digestion system



### Animals' teeth:

The teeth of animals are designed to eat different foods depending on the diet of the animal.



*Herbivore*: An animal that eats plants

*Omnivore*: An animal that eats plants and animals

*Carnivore*: An animal that feeds on other animals